

Everything about

UNICOS >

Brilliantly Conceived & Beautifully Crafted





INDEX

UNICOS Co., Ltd. is Health-Care Product developing and manufacturing Venture Company in South Korea.

We are established in 2002 and our main goal is to realize Health and Happiness of Human Being.

RK	URK-900F	04
	URK-800A	05
	URK-700A	06

LM	ULM-900	07
----	---------	----

DR	UDR-800P	09
----	----------	----

CP	ACP-900	10
----	---------	----

LC	ULC-900	11
----	---------	----

PE	UPE-900	13
----	---------	----

PT	UPT-900	14
----	---------	----

PB	UPB-900	15
----	---------	----

LB	ULB-900	17
----	---------	----

Networking System	18
-------------------	----

One Touch Alignment, Tracking, Focus & Capture.

URK-900F is used to determine the initial, objective refractive values for a patient's eyes in the workflow of refraction and to determine the optical prescriptions for myopia, hyperopia and astigmatism.



3D Auto Alignment Function

3 Dimensional movement mechanism enables to track down a measuring focus of an eye automatically and complete the measurement for eyes by auto shooting automatically.

URK-900F 3D Auto Focusing System

URK-900F can determine the best position for precise focusing with the help of high resolution scanner.

LCD Tilting & Swiveling

The LCD moves freely and can be measured anywhere, LCD Tilting & Swiveling to 270° and provide a monitor reverse function.

Measurement Mode

R/K mode	Successive Refractometry & Keratometry
Ref mode	Refractometry
Ker mode	Keratometry
CLBC mode	Contact lens base curve measurement

Refractometry

Vertex Distance (VD)	0.0, 10.0, 12.0, 13.5, 15.0 mm
SPH	-25.00 ~ +22.00 D (0.12 D / 0.25 D)
CYL	0.00 ~ +/-10.00D
AXIS	1 ~ 180°
Cylinder Form	-, +, +/-
Pupil Distance	10 ~ 85 mm
Minimum Pupil Diameter	Ø 2.0

Keratometry

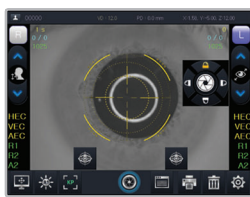
Radius of Curvature	5.0 ~ 10.2 mm
Corneal Power	33 ~ 67.50 D
Corneal Astigmatism	0.00 ~ -15.00 D (0.12 / 0.25 D)
AXIS	1 ~ 180°
Corneal Diameter	2.0 ~ 12.00 mm

Others

Printer	Thermal / Auto cutting
Power Saving	Nominate by 3, 5, 10 Minutes
Display	8 Inch 24 bit colored TFT LCD
Power Supply	100 ~ 240V ~, 50/60Hz, 50 ~ 70VA
Data Output	RS-232 Interface, USB(for service)
Chinrest movement	Max, 65mm, Motorized operating
Dimension/Weight	285mm(W) X 522mm(D) X 438mm(H) / 19kg

Designs and details can be changed without prior notice for its improvements.

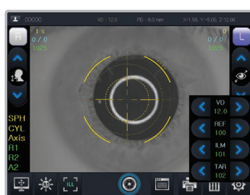
URK-900F User-oriented GUI



Peripheral Keratometry



Mode Select



Retino Illumination



Support for many languages : It serves many languages, basically 10 languages.
(Chinese, English, French, German, Italian, Japanese, Portuguese, Russian, Spanish and Korean)

Auto Refracto - Keratometer URK-800A

More Wide LCD & More Intuitive User Interface.

You can check how much crystalline lens are blurred by cataract and cornea is injured. At the same time, Save 2 cuts for each eye (Max.4 cuts for one patient), Furthermore may compare the captured data.

Advanced Measurement Technology

The image chips to be specially designed allow REF measuring speed to be faster to get a more accurate and stable measurement data.

Measure Iris and Pupils Diameters

By image capture function, user can check Iris & Pupil diameters with ease to reinforce the accuracy of optometry.

Illumination & Peripheral Keratometry

You can check abnormal crystalline lenses, cataracts and scratches of corneas helping you to see how healthy patient's eyes are. With an enforced REF power, you can check SPH, CYL, and Axis that could not be measured in a normal mode. It may measure periphery of cornea both horizontally and vertically from the center of cornea to get curvature and eccentricity value of all points. It may allow the best fitting for contact lenses.

Measurement Mode

R/K mode	Successive Refractometry & Keratometry
Ref mode	Refractometry
Ker mode	Keratometry
CLBC mode	Contact lens base curve measurement

Refractometry

Vertex Distance (VD)	0.0, 10.0, 12.0, 13.5, 15.0 mm
SPH	-25.00 ~ +22.00 D (0.12 D / 0.25 D)
CYL	0.00 ~ +/-10.00D
AXIS	1 ~ 180°
Cylinder Form	-, +, +/-
Pupil Distance	10 ~ 85 mm
Minimum Pupil Diameter	Ø 2.0

Keratometry

Radius of Curvature	5.0 ~ 10.2 mm
Corneal Power	33 ~ 67.50 D
Corneal Astigmatism	0.00 ~ -15.00 D (0.12 / 0.25 D)
AXIS	1 ~ 180°
Corneal Diameter	2.0 ~ 12.00 mm

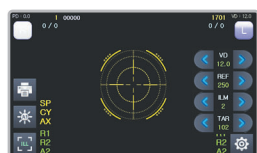
Others

Printer	Thermal / Auto cutting
Power Saving	1 ~ 10 minutes (Step 1minute)
Display	7 Inch LCD colored Monitor
Power Supply	100 ~ 240V ~, 50/60Hz, 60 ~ 90VA
Chinrest movement	Max, 65mm, Motorized operating
Data Output	RS-232 Interface, Video Output, USB(for service)
Dimension/Weight	275mm(W) X 525mm(D) X 440mm(H), 18Kg

Designs and details can be changed without prior notice for its improvements.



Automatic Cutting Printer



Retino Illumination



Support for many languages : It serves many languages, basically 10 languages. (Chinese, English, French, German, Italian, Japanese, Portuguese, Russian, Spanish and Korean)

Auto Refract - Keratometer URK-700A

The best Strategic Refracto – Keratometer.

7 Inch LCD Wide Touch Screen is applied to URK-700A to allow an easy operation and to make an accurate measurement more quickly.



7 Inch Colored Touch LCD

A measurement data and various functional program appear in color on a high clear and precise 7 Inch Touch Wide LCD screen.

Communication interface

A data communication is available among the diagnosis devices by RS-232 and USB.

Comfort and Easy Operation

Mechanically, the main body moves smoothly right to left and forward to backward by an improved design for a base sliding structure.

Measurement Mode

R/K mode	Successive Refractometry & Keratometry
Ref mode	Refractometry
Ker mode	Keratometry

Refractometry

Vertex Distance (VD)	0.0, 10.0, 12.0, 13.5, 15.0 mm
SPH	-25.00 ~ +22.00 D (0.12 D / 0.25 D)
CYL	0.00 ~ +/-10.00D
AXIS	1 ~ 180°
Cylinder Form	-, +, +/-
Pupil Distance	10 ~ 85 mm
Minimum Pupil Diameter	Ø 2.0

Keratometry

Radius of Curvature	5.0 ~ 10.2 mm
Corneal Power	33 ~ 67.50 D
Corneal Astigmatism	0.00 ~ -15.00 D (0.12 / 0.25 D)
AXIS	1 ~ 180°
Corneal Diameter	2.0 ~ 12.00 mm

Others

Printer	Thermal
Power Saving	1 ~ 10 minutes (Step 1minute)
Display	7 inch LCD colored Monitor
Power Supply	100 ~ 240V ~, 50/60Hz, 60 ~ 90VA
Chinrest movement	Manual, Max 55mm
Data Output	RS-232 Interface, USB(for service)
Dimension / Weight	248mm(W) X 476mm(D) X 473mm(H), 21Kg

Designs and details can be changed without prior notice for its improvements.

Embedded Printer



Support for many languages : It serves many languages, basically 10 languages.
(Chinese, English, French, German, Italian, Japanese, Portuguese, Russian, Spanish and Korean)



Auto Lensmeter ULM-900

The UNIQUE of UNICOS Lensmeter.

ULM-900 meets market requirement with UNICOS' high technology and modern design. It serves quick response and reliable data with maximized satisfaction for user convenience.



Wavefront
131 Pin hole image



PD Measurement Inspection

LCD Rotated 110°



■ **UV & BLUELIGHT Measurement functions** : UV & BLUELIGHT blocking ratio of each lens could be measured to be shown on monitor at a glance.

Adopting the Hartmann Sensor WAVEFRONT Technology

The **WAVEFRONT Technology** of the **Hartmann Sensor** enables accurate data detection compared to the existing **131 Pin hole** of the lens meter.

Accurate and Fast centering

Measurement error has been minimized through optimizing algorithms and optical points could be analyzed accurately using high-resolution camera.

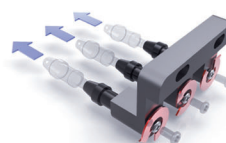
Improved Multi-Focal Lens Measurement

ULM-900 could accurately measure the far vision and near vision by detecting the position of the lens in real time.

New interface – Screen PD measurement

7 Inch Wide LCD allows to minimize eye fatigue and support lens separation mode and screen PD measurement to ensure user convenience.

Marking Device (Ink Cartridge)



Long-lasting & Accurate
representation.

Measurement Range

Spherical Power (SPH)

-25.00 ~ +25.00D (VD 12mm), Increments : 0.01 / 0.06 / 0.12 / 0.25D

Cylindrical Power (CYL)

0.00 ~ ±10.00D, Increments : 0.01 / 0.06 / 0.12 / 0.25D, Form : - / + / -+

Axis

1 ~ 180°, Increments : 1°

Addition Power

0.00 ~ ±10.00D, Increments : 0.01 / 0.06 / 0.12 / 0.25D

Prism Power

0.00 ~ 10.00Δ, Increments : 0.01 / 0.06 / 0.12 / 0.25Δ, Form : OFF / X-Y / P-B

UV, BlueLight

0 ~ 100%, 0 ~ 100%

Applicable lenses

Applicable Lens type

Single lens / Double focal lens / Three focal lens / Progressive multifocal lens
Hard contact lens / Soft contact lens (A special accessory is required respectively.)

Lens Diameter

16 ~ 100mm

Note

Data Out RS-232C, USB

Internal Printer Thermal printer

Display 7.0 inch Full Color LCD Monitor, Touch Panel

Power Supply AC100V ~ 240V, 50/60Hz

Power Consumption 45 ~ 65VA

Dimension / Weight 175mm(W) X 255.5mm(D) X 478mm(H) / 5.25kg

Designs and details can be changed without prior notice for its improvements.



10.2 Inch large and Detachable tablet

The 10.2 Inch large and clear detachable tablet allows user to carry out examination freely without space limit and guide to realize remote medical.

It serves various images together with intuitive UI so that user may recognize the present circumstances of operation panel and data at a glance. (Locking system function, Prism-off, Aux-off function, External data representation and Touch masking masking function, and so on)

User may select the desired function quickly and accurately through a wide 10.2inch screen.

It is convenient for user to explain a process to patients by showing various pictures during measurement.



Tablet and OP Panel manipulation, 240° rotation

Optometry using tablets and OP panels is possible, and it can be used for close inspection with a pad holder that is adjusted by 240°.



Jog Dial function

Menu selection and data value selection/testing and data operations management (SPH, CYL, AXIS, ADD, VA, Prism, etc.) can be done quickly via the jog dial

Paper exchange

A high-speed printer is built into the rear of the control panel and allows easy exchange of paper.



Easy S/W Update

It is highly compatible with external equipment and provides an easy upgrade experience using USB and Android APP.



Wireless data communication

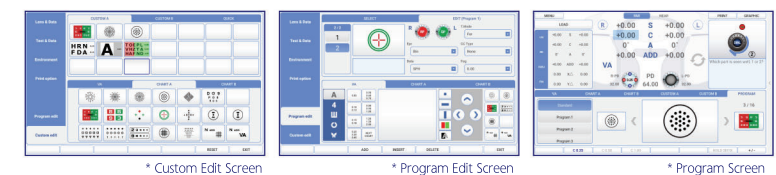
Data transmission using wireless communication can be installed in a wider environment, and a network can be formed between optometry equipment to quickly and efficiently derive and manage prescription results.

Digital - Refractor UDR-800P

Eco-Friendly antibacterial material is applied.

Ensure faster restarting time, faster lens change and a reduced operating noise. UDR-800P will lead your business to be successful.

User may edit their preferred program for them to do a stable measurement without delay.



User may explain the condition of each eye by showing pictures such as Color blindness test, Eye image, Near target, Dark target grid, Stereoscopic target to patients.



It provides guides and information necessary for optometry, and provides assistive lens orientation and other additional information to help optometry with pictures and explanations for easy and accurate adjustment.

Cross cylinder lens

Jackson & Dual Cross Cylinder lens is fitted to precisely determine the axis and frequency of the astigmatism correction lens so that no residual astigmatism is induced.



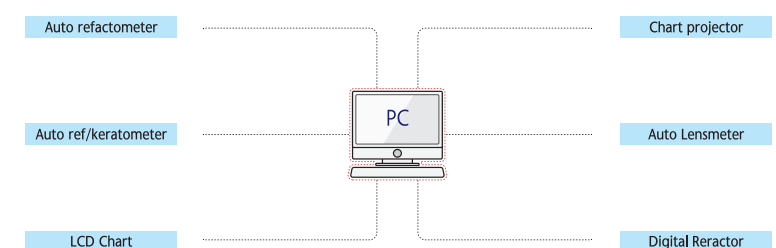
Forehead position sensor

When the examinee puts his forehead on the forehead to keep the distance between the vertices constant, the LED lights up on the front so that the forehead position can be more easily checked before the examination.



Electronic Medical Record

Efficient data management is possible by using the electronic medical record system.



Efficient data transmission among a series of UNICOS Brands. It has high compatibility with external devices and S/W upgrade may be done by USB and Android APP easily and conveniently.

Measuring Range

Spherical Lens	-29.00 ~ +26.75D (For general test) -19.00 ~ +16.75D (For cross cylinder & Prism test) (Step 0.12D / 0.25D / 0.5D / 1D / 2D / 3D)
Cylinder Lens	0.00 ~ 8.75D (Step 0.25D / 0.5D / 1D / 2D / 3D)
Cylinder Axis	0 ~ 180° (Step 1 / 5 / 15 / 30 / 45°)
Pupil Distance	Far 48 ~ 80 mm (Step 0.5 / 1.0 mm) Near 45 ~ 75 mm (Step 0.5 / 1.0 mm)
Working Distance	35 ~ 70 cm (Step 5 cm)
Rotary Prism	0 ~ 20 Δ (Step 0.1 Δ / 0.2 Δ / 0.5 Δ / 1 Δ / 2 Δ)
Cross Cylinder	Jackson Cross Cylinder ± 0.25D Jackson Cross Cylinder ± 0.50D Dual Cross Cylind
Retinoscopy Lens	+1.5D, +2.0D (Test Distance 67cm, 50cm)

Specifications

Body	362(W) X 83(D) X 229(H), 3.5Kg
Controller	215(W) X 230(D) X 226(H), 1.5Kg
Junction Box	266(W) X 60(D) X 239(H), 1.0Kg
Tablet PC (PAD)	OS : Android 10
Recommended Spec.	CPU : Snap-Dragon 662 RAM : 3GB
Power Supply	AC 100 ~ 240V, 50/60Hz
Power Consumption	70 ~ 95VA

Auxiliar Lens

Open/ Close Lens	
Pin Hole Lens	Φ 1mm
Moddox Rod	Right Eye (Horizontal Red), Left Eye (Vertical Red)
Red / Green Filter	Right Eye (Red), Left Eye (Green)
Polarized Light Filter	Right Eye (135°, 45°), Left eye (45°, 135°)
Separating Prism	Right Eye (6ΔBU) Left eye (10ΔBI can be added to 0~5Δ)

PD Test Lens	
Fixed Cross Cylinder Lens	Jackson Cross Cylinder ±0.05D, Axis fixation 90°
Vision Degrees	32°

Designs and details can be changed without prior notice for its improvements.



Auto chart projector **LED** ACP-900

The UNIQUE of UNICOS LED Chart.

Various and Perfect Projection Charts
Four different types with 40 charts may show clear and bright images for a proper vision test.



Chart Projector using LED

The color of LED may be altered according to customer's preference.

LED to be applied to ACP-900 provides more clear, bright, and precise chart images.

No need to change lamp because of long life cycle.

The color of LED may be altered according to customer's preference.

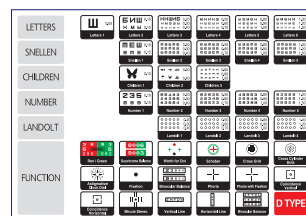
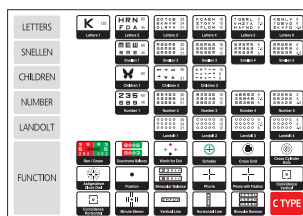
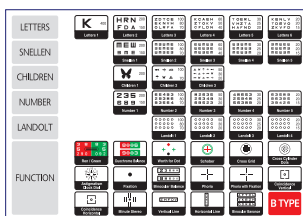
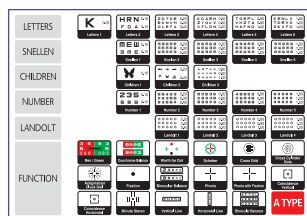
Small Size and Light Weight

Downsizing and light weight make better use of a space effectively.

Chart	40 Selections
Chart Selection Speed	Average 0.2sec.
Mask	1 Open, 5 Horizontal lines, 8 Vertical lines, 21 Single letters
Filter	Red / Green
Projection Distance	2.0 ~ 7.0 M (3M is standard)
Projection Magnification	30 X (at 5m)
Tilt Angle	Ball Joint ($\pm 15^\circ$)
Lamp	5V 4W(LED)
Power Source	100 ~ 240V ~, 50 / 60Hz
Power Consumption	45 VA
Auto - Off Function	5 ~ 10 Minutes after
Dimensions	Main body : 290(W) X 186(D) X 198(H) mm Table Stand : 169(W) X 365(D) X 82(H) mm Remote controller : 20(W) X 64(D) X 195(H) mm
Net weight	3.62kg (Body : 3.18kg + Stand : 0.44kg) Remote controller : 110g
Standard Accessories	Dust cover, Metal screen (400mm x 350mm), Spare fuses 2EA, Batteries (AA Sized) 2EA, Power cable, Allen wrenches (2.5mm and 5mm), Operation manual
Optional Accessories	Red / Green Glasses, Polarization Glasses
Interface	RS-232 connector for simultaneous control of each chart, mask and R / G filter by a digital refractor's operation panel.

Designs and details can be changed without prior notice for its improvements.

Chart Type (A / B / C / D)

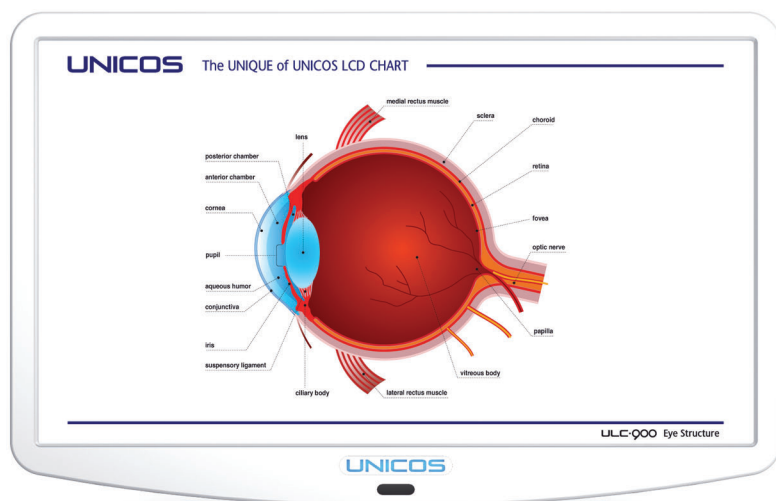




LCD Chart ULC-900

The UNIQUE of UNICOS LCD Chart.

ULC-900 provides the most reliable test result by the technology to be developed by UNICOS to all types of patients. All of user may have the best experience with ULC-900 by easy and convenient operation and program.



24 Inch TFT LCD Monitor

24 Inch TFT monitor with high-resolution display for wider and clearer view.

Various installation methods for securing enough space even in a limited area.

High performance polar filters

Keep charts clear between the range of 1.5M ~ 7.5M test distance by high performance polar filters.

Heterophoria / Heterotropia / Stereopsis tests with polar separation charts.

Installation distance

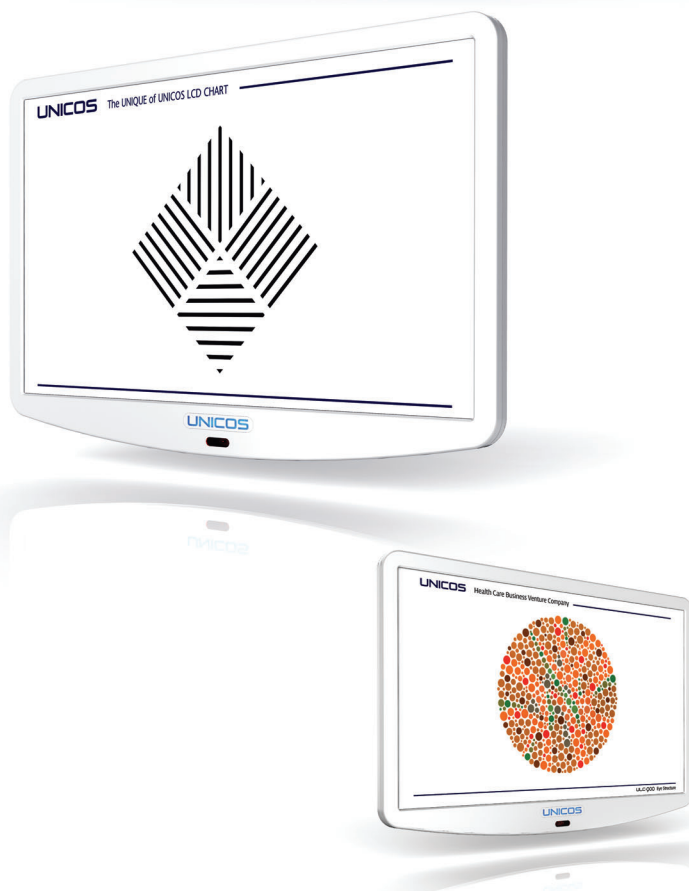
May control installation space from 1.5M up to 7.5M by 0.25m.

May use of Mirror functions at the small space.

White-black contrast



It allows to test LASIK patients.



■ **Color-blindness tests** : Preset seven type's charts / Random selection function.



LCD Type	24Inch TFT, LED Backlight
Resolution	1920 (H) X 1080 (V) Pixels
Display Area	531.36 (H) X 298.89 (V) mm
Dimension / Weight	575(W) X 370(H) X 43(D) mm, 4Kg
RC size / Weight	64(W) X 195(H) X 20(D) mm, 110g
Power Supply	DC 5V / 5A Adapter
Power Consumption	Max. 25W
Data Output	RS-232 Interface, USB(for service)
Chart	Landolt Ring / Snellen Numbers / Letters / Korean Children
Masking	Single Character, Horizontal Line, Vertical Line Normal, Center
Filter	Red / Green Filter
Visual Functions	Red / Green, Polar separation, 3D polar, Strabismus, 3D Red / Green, Color blindness
Distance	1.5M ~ 7.0M (Changes into 0.25meter unit)

Accessories

Cradle - Wall (Standard) / Floor (Optional) / Table (Optional)

Special glasses - Polarizing glasses (Optional),

Red/green glasses (Optional) /Remote Controller (Batteries), Adapter,
Serial cable, Power cable, Cleaning cloth

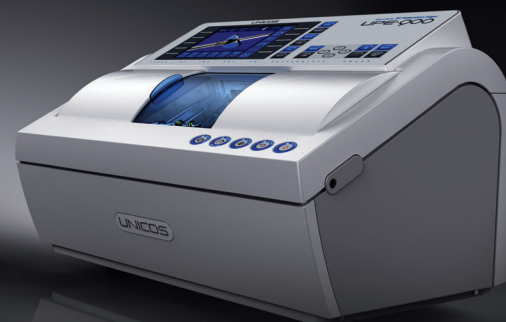
Designs and details can be changed without prior notice for its improvements.



The UNIQUE of UNICOS EDGER UPE-900

State-of-the-art 3D Patternless Edger.

The UPE-900 is a patternless edger which can edge all materials and perform all type of finishing : Automated controlled bevel or customized, mini bevel for metal frames and rimless finish.



The built-in safety bevel – grooving functionality is totally adjustable by the operator who can modify all parameters (width, depth) using the colour touch screen simply.

Simplicity

All edging parameters are adjustable via the intuitive operator's interface.

The large Colour Touch Screen offers a clear understanding of the edging program.

The lens shape can be easily modified to fit the optician needs.

Lens Processing

Various Bevel Processing for Sturdy Fitting.

- Mini bevel, Asymmetric bevel, Semi U bevel, Step bevel.
- More accurate fitting by complex processing combining bevel, rimless and groove.



step
BEVEL

standard
BEVEL

hybird
GROOVE



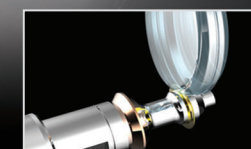
asymmetric
BEVEL



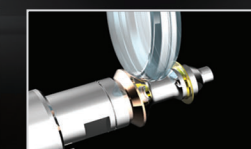
mini
BEVEL



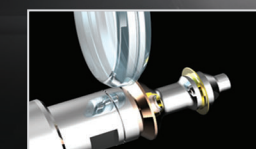
GROOVE



Grooving Processing



Lens Front Processing



Lens Rear Depth Processing

UPE-900 SPECIFICATIONS

Edged materials	Mineral / Organic / Hi-Index / Polycarbonate / Trivex / Acrylic
Finishing	Bevel - Automatic <ul style="list-style-type: none">- According to lens / Frame base curve- Customisable Mini bevel (mini 0.6mm) Rimless Polishing bevel and rimless
Lens capacity	Mini 17mm Maxi 80 mm

Built in Software	Shape modification <ul style="list-style-type: none">- Up / Down, - Temporal / Nasal, - Annular Re-edging already edged lens
Interface	PORT 1 (Selectable) <ul style="list-style-type: none">- RS232C : For PC or Lens Edger- TCP/IP : For internet server PORT 2 (Optional) <ul style="list-style-type: none">- RS232C : For Barcode reader
Power Supply	AC 100V - 240V 50/60Hz
Power Consumption	1KVA
Dimension / Weight	580 (H) X 440 (D) X 400 (H) , 36Kg

Design and details are subject to change without prior notice for it's improvements.



- 3D Patternless Lens Edging for Lab

- Grooving & Chamfering

- User Friendly Operation

- OMA compliance



■ Wireless Communication



■ 1:n Communication



■ OMA Compliance,
Size Adjustable through computer

The UNIQUE of UNICOS TRACER UPT-900

State-of-the-art Tracer.

High Precision 3D Tracing

The UPT-900 tracer measures with extreme care frames in 3D to offer the best possible accuracy and a perfect matching between the lens and the frame, even highly curved.

Fast tracing

The UPT-900 tracer may scan either both eyes or single eye rapidly.

It also has an automatic recovery feature to rescan the frame automatically at reduced speed in case the quality of a frame does not allow a fast speed tracing.

Universal

The UPT-900 tracer may scan small frames (B size 17 mm) with a constantly real-time monitored stylus pressure to reduce frame distortion.

The important Z movement capacity allows the measurement for high base-curved frames.

SPECIFICATIONS

Tracing Method	Automatic 3-D binocular tracing
Tracing size	Frame : Φ 17 mm to Φ 90 mm Pattern : Φ 24 mm to Φ 75 mm
Measurement item	Shapes, Frame curve, FPD Frame : 3-D circumference Pattern / Demo lens : 2-D circumference Frame front wrapping angle
Frame clamping	Automatic one-touch clamping
Measuring points	1000
Tracing time	Frame : Max 40sec, Pattern : Max 30sec
Interface	PORT 1 (Selectable) - RS232C : For PC or Lens Edger - TCP/IP : For internet server PORT 2 (Optional) - RS232C : For Barcode reader
Power supply	AC 100V-240V 50/60Hz
Power consumption	50VA
Dimension / Weight	240 (W) X 300 (D) X 200 (H), 10 Kg
Standard accessories :	Pattern holder, Suction cup, Standard frame Standard pattern, Power code, RS232C NULL Modem cable
Software :	TraceApp.exe : For setting, Unicos.exe : For internal calibration AutoTune.exe : For calibration
Working mode :	UNICOS Mode, OMA Ascii, OMA Packed binary.

Designs and details can be changed without prior notice for its improvements.

The UNIQUE of UNICOS BLOCKER UPB-900

State-of-the-art Manual Blocker.

Intuitive design

The UPB-900's compact structure allows accurate blocking with simple functions and intuitive graphics.

Server for mini-lab

UNICOS' Centering device, Model UPB-900 has a large screen with a diameter of 75mm and permeable illumination system for clear viewing.

The segment layout mark is provided on the screen for right and left lense, the screen could be lowered to confirm the position of Marked points, segment placement, etc.

UPB-900 is compact, and is simple to operate.

– Simple & Easy Blocking

– Size Adjustable

– LED shine brighter

– Error Free

– Low Cost

Designs and details can be changed without prior notice for its improvements.



The UNIQUE of LCD BLOCKER ULB-900

10.1 Inch Touch LCD Tracer and Blocker.

ULB-900 is a combined model to serve bothfunction of Tracer and Blocker. 10.1inch LCD allows accurate Tracing and Blocking with fast and premise processes.

Fast and Accurate Scanning

Fast lens scanning (0.5 Sec) through precise contour tracing with high resolution camera and brightness adjustment.

Accurate Blocking

Various marking icons for each lens type support accurate blocking.

Product extension

2 Edgers (UPE-900) and 2 Tracers (UPT-900) can be connected at the same time with cable.

Convenient Data Management & S/W Updating

Folder format and memo function make it more convenient to manage data and S/W Updating could be done by USB easily.

Wide Capacitive LCD screen with Intuitive UI &Fast and Accurate Scanning

The 10.1 inch LCD capacitive touch screen, with pictograms of all task icons in the UI, is easy for users to quickly prepare for the entire process. Fast lens scanning (0.5 Sec) through precise contour tracing with high resolution camera and brightness adjustment.

Blocking Function

Method	Imaging of reflected image	
Maximum lens diameter	80 mm in diameter	
Display	10.1 Inch Full Color LCD Monitor, Touch Panel	
Blocking accuracy	Position	±0.5mm
	Axis angle	±1°
	Blocking pressure	2.5kgf ± 0.5kgf

Layout Range

FPD	30.00 to 99.50 mm
PD	30.00 to 90.00 mm
1/2 PD	15.00 to 49.75 mm
Optical center height	± 9.95 mm
Size adjustment	± 10.00 mm (Diameter)

Layout Entry

Entry items	FPD (DBL can be selectable)
	PD (1/2PD can be selectable)
	Optical center height
	Processing specification

Optical Tracing

Automatic horizontal alignment	Yes (By three focimeter dots)
Equivalent sphere	[-1D ~ +1D]
Camera magnification	X1, X2
Measurement range	Ø 30 ~ 80

Communication Function

EDGER 1	(RS-232) For connection with a (first) lens edger
EDGER 2	(RS-232) For connection with a (second) lens edger
TRACER 1	(RS-232) For connection with a (first) tracing unit
TRACER 2	(RS-232) For connection with a (second) tracing unit
USB 2.0 Port	For connection with a barcode scanner

Other Functions

Data Control function / Shape Editor function / Custom default setting function
Screen auto off function / Camera Brightness Adjustment function

Power and Dimensions & Weight

Power source	DC 12V / 1A
Power consumption	12VA
Dimension / Weight	250mm(W) X 300mm(D) X 491mm(H) / 7.9kg

Standard accessories : Operator's manual / Adaptor / RS-232C cable / Power cord / Lens table (For optical tracing) / Lens table (For blocking)
Optional accessories : Barcode Scanner (B1000)

Designs and details can be changed without prior notice for its improvements.



10.1 Inch LCD Monitor Swiveling 160°, Tilting 95°
It's equipped with 10.1 Inch LCD monitor to enable to measure comfortably at any space or location.



High Technology-Intensive masterpiece
of UNICOS 900F System.

Networking system

Efficient data transmission among a series of
UNICOS brands.



UNICOS 800A System to be Widespread all over the world.

Networking system

Efficient data transmission among a series of UNICOS brands.





UNICOS' new Future
UNICOS

282-30, Munji-ro, Yuseong-gu, Daejeon, Republic of Korea (ZIP CODE) 34050
TEL. +82 42 825 8045 FAX. +82 42 581 0053
www.e-unicos.com / E-mail : marketing@e-unicos.com